



2024  
new  
arrivals



**Siesta**  
exclusive

## Paris Lounge Sofa Armchair

Paris Lounge Sofa Armchair is stackable and produced with a single injection of polypropylene reinforced with glass fiber, for indoor and outdoor use and with non-slip feet. The Paris collection also includes a coffee table and footrest table, designed to match the styling silhouette of the chair to perfection.



Stackable  
İstiflenebilir



Climatic conditions  
4 mevsim kullanım



UV protected  
UV korumalı



Indoor  
İç mekan



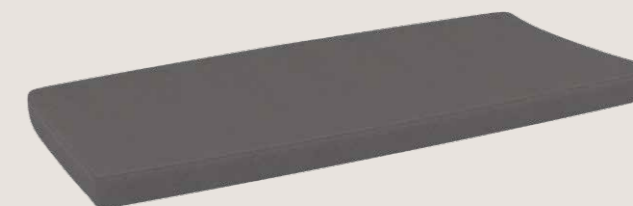
Outdoor  
Dış mekan



Paris Lounge Sofa Armchair

## Paris Lounge Sofa Cushion

5 cm thick cushion covered with Etisilk polyester fabric and finished with piping. Cushions are specially designed for Paris Lounge Sofa. Water resistant with UV.





Paris Lounge Sofa Cushion

## Paris Lounge Armchair

Paris Lounge Armchair is stackable and produced with a single injection of polypropylene reinforced with glass fiber, for indoor and outdoor use and with non-slip feet. The Paris collection also includes a footrest table, designed to match the styling silhouette of the chair to perfection.



Stackable  
İstiflenebilir



Climatic conditions  
4 mevsim kullanım



UV protected  
UV korumalı



Indoor  
İç mekan



Outdoor  
Dış mekan



Paris Lounge Armchair

## Paris Lounge Armchair Cushion

5 cm thick cushion covered with Etisilk polyster fabric and finished with piping. Cushions are specially designed for Paris Lounge Armchair. Water resistant with UV.







Paris Lounge Armchair Cushion

## Helen Bar 65

Helen stacking bar stool h.65 cm is produced with a single injection of polypropylene reinforced with glass fiber obtained by means of the latest generation of air moulding technology with neutral tones. For indoor and outdoor use.



Stackable  
İstiflenebilir



UV protected  
UV korumalı



Climatic conditions  
4 mevsim kullanım



Indoor  
İç mekan



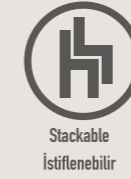
Outdoor  
Dış mekan



Helen Bar 65

## Helen Bar 75

Helen stacking bar stool h.75 cm is produced with a single injection of polypropylene reinforced with glass fiber obtained by means of the latest generation of air moulding technology with neutral tones. For indoor and outdoor use.



Stackable  
İstiflenebilir



UV protected  
UV korumalı



Climatic conditions  
4 mevsim kullanım



Indoor  
İç mekan



Outdoor  
Dış mekan



Helen Bar 75

## Paris Lounge Table

Paris Lounge Table is made of durable weather-resistant resin. It is UV protected which insures the colors will not fade. Can be disassembled. For indoor and outdoor use.



Climatic conditions  
4 mevsim kullanım



UV protected  
UV korumalı



Indoor  
İç mekan



Outdoor  
Dış mekan



Stackable  
İstiflenebilir



Paris Lounge Table

## Paris Side Table/Footrest

Paris is a footrest/side table for outdoor use made of fiberglass resin with UV protection and presented as a functional footrest in the new Paris lounge collection of relaxation armchairs, Paris is a refined furnishing accessory that can be used as a side table. For indoor and outdoor use.



Climatic conditions  
4 mevsim kullanım



UV protected  
UV korumalı



Indoor  
İç mekan



Outdoor  
Dış mekan



Stackable  
İstiflenebilir





Paris Side Table/Footrest

**Serge Ferrari**

## Batyline Duo

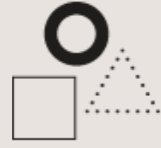
Batyline Duo is a resistant fabric, combining one warp thread and two weft threads for subtle colour combinations and a textile effect. 4 references with a twist effect: random weave, giving a flecked effect to the fabric.

*Batyline Duo eğri ipliği ve iki örgü ipliği usta renk kombinasyonları ve tekstil etkisi elde etmek için bir araya getiren dirençli kumaştır. İkili etkisi ile 4 referans: kumaşa doğal bir etki veren rastgele örgü*



Extreme outdoor  
resistance with no sag

*Sarkmasız aşırı dış  
mekan direnci*



A multitude of possible  
colour combinations

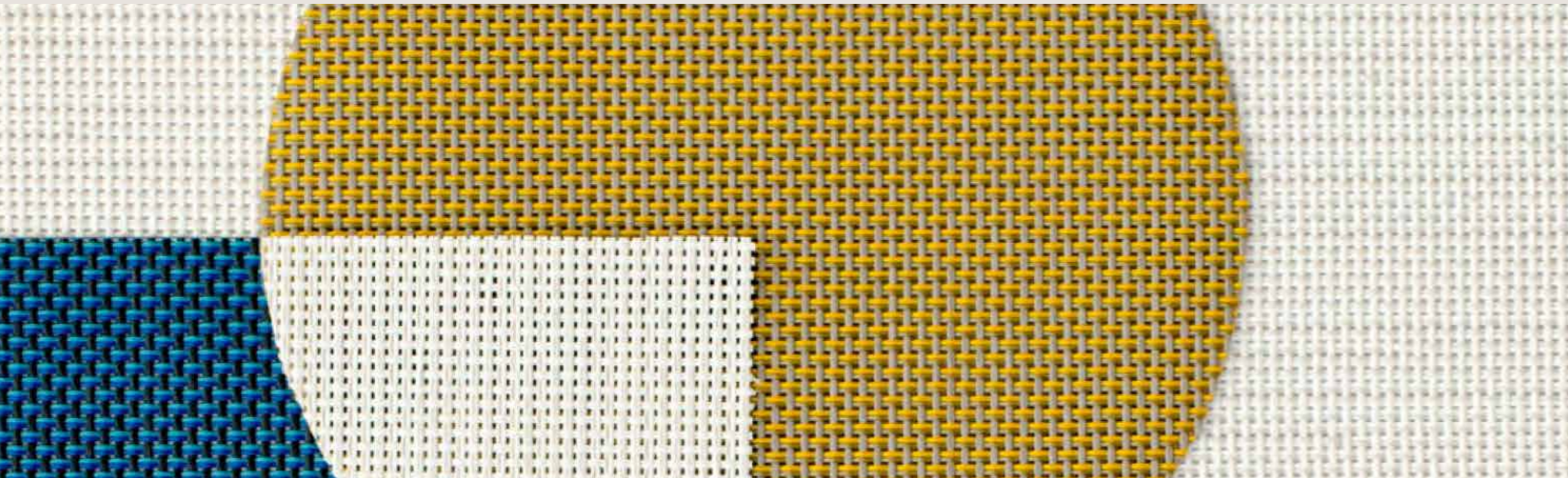
*Birçok olası renk  
kombinasyonu*



Twist effect for a  
natural appearance

*Doğal görünüş için  
ikili etki*

The Batyline durability with a vibrant color mix.  
*Canlı renk karışımıyla Batyline dayanıklılığı.*



# Tropic

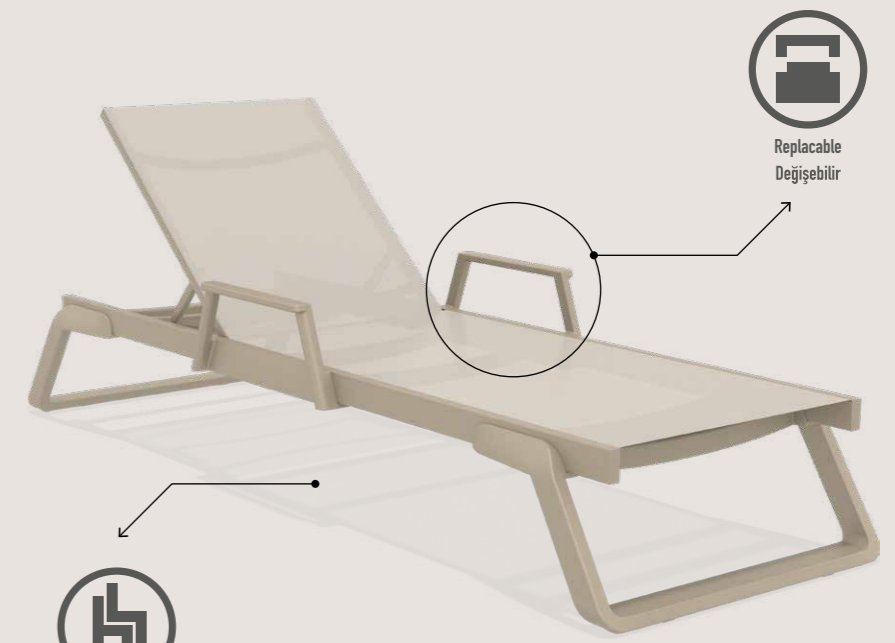
Tropic sunlounger with legs in resin reinforced with glass fiber combined with lacquered aluminium structure. Cover in breathable synthetic replaceable fabric, back reclining in 5 positions, with non-slip feet and small wheels. Two materials combined together to make a very resistant, functional light-weight and stackable sunlounger.





## Tropic Arm

Armrest for Tropic sunlounger. Arms in resin reinforced with glass fiber. Can be fixed onto the sun lounger frame with the provided screws.





Tropic Arm

## Paris

Paris stacking armchair is produced with a single injection of polypropylene reinforced with glass fiber obtained by means of the latest generation of air moulding technology with neutral tones. For indoor and outdoor use.



Stackable  
İstiflenebilir



Climatic conditions  
4 mevsim kullanım



UV protected  
UV korumalı



Indoor  
İç mekan



Outdoor  
Dış mekan



Paris



# Helen

Helen stacking chair is produced with a single injection of polypropylene reinforced with glass fiber obtained by means of the latest generation of air moulding technology with neutral tones. For indoor and outdoor use.



Stackable  
İstiflenebilir



Climatic conditions  
4 mevsim kullanım



UV protected  
UV korumalı



Indoor  
İç mekan



Outdoor  
Dış mekan



## Tom 45

Tom stacking stool h.45 cm is produced with a single injection of polypropylene reinforced with glass fiber obtained by means of the latest generation of air moulding technology with neutral tones. For indoor and outdoor use.



Stackable  
İstifenebilir



Climatic conditions  
4 mevsim kullanım



UV protected  
UV korumalı



Indoor  
İç mekan



Outdoor  
Dış mekan



## Tom Bar 65

Tom bar stool h.65 cm is produced with a single injection of polypropylene reinforced with glass fiber obtained by means of the latest generation of air moulding technology with neutral tones. For indoor and outdoor use.





Tom Bar 65

## Tom Bar 75

Tom bar stool h.75 cm is produced with a single injection of polypropylene reinforced with glass fiber obtained by means of the latest generation of air moulding technology with neutral tones. For indoor and outdoor use.



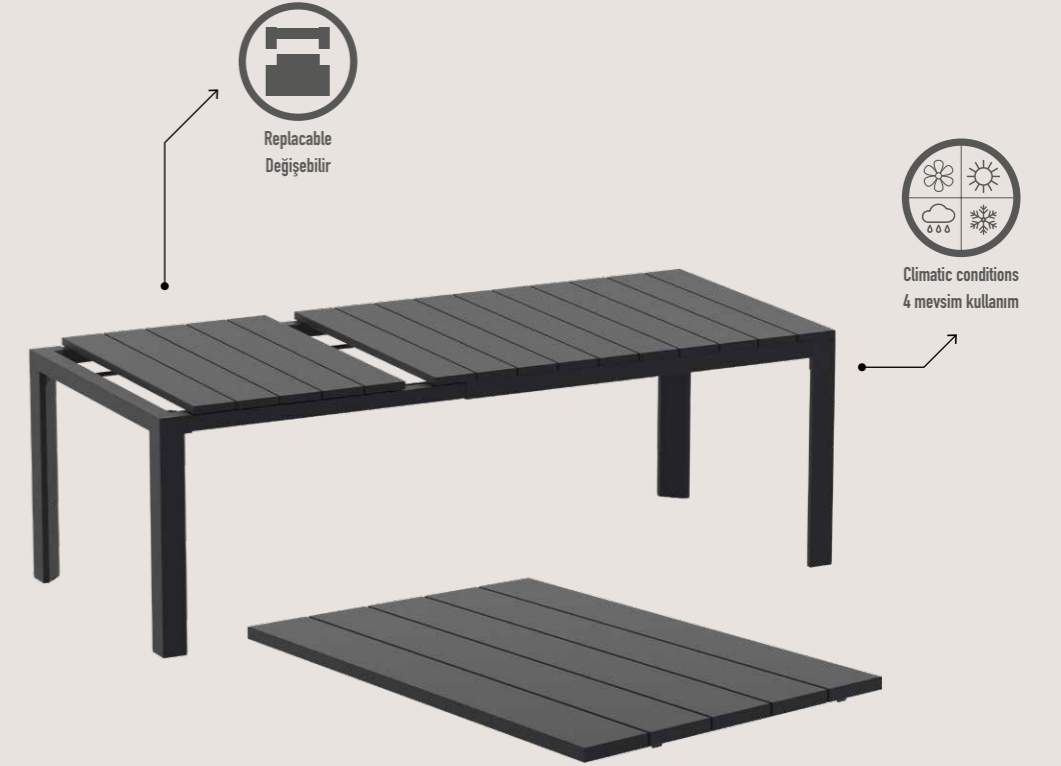


Tom Bar 75



## Atlantic Table 140/210

Extendible table from 140 to 210 cm in polypropylene with aluminium frame. Easily expandable, giving you a choice of two size options. Smart extending mechanism makes it easy to adjust the table to your preferred size. For indoor and outdoor use with UV protection.

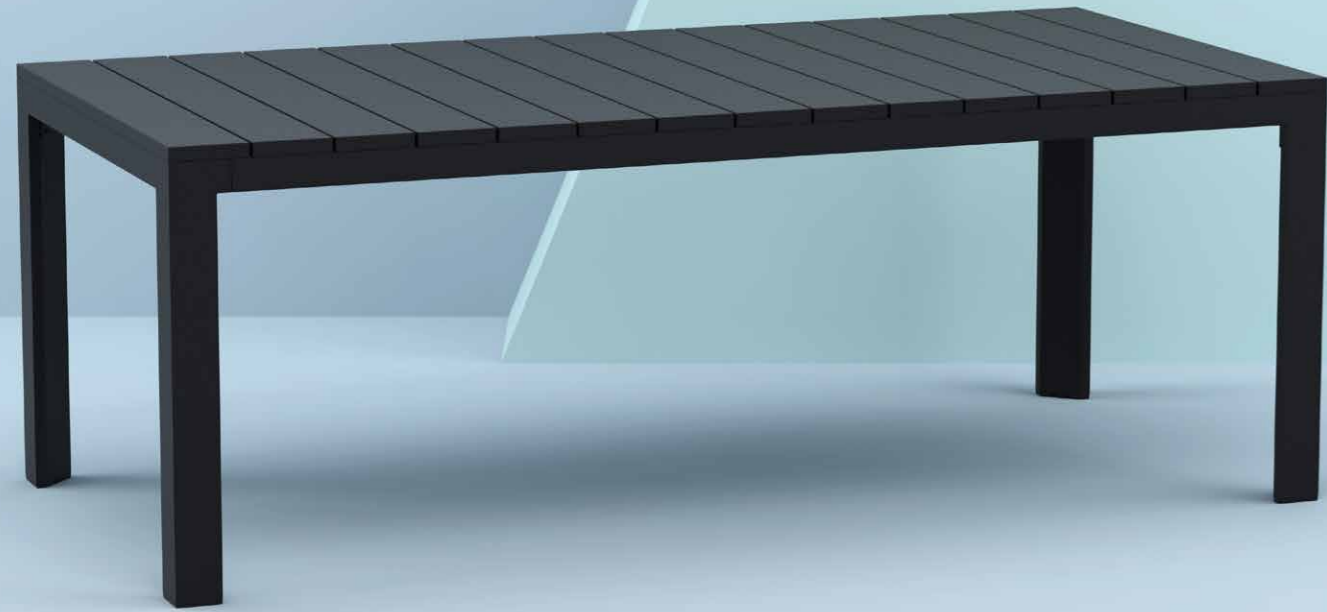




Atlantic Table 140/210

## Atlantic Table 210/280

Extendible table from 210 to 280 cm in polypropylene with aluminium frame. Easily expandable, giving you a choice of two size options. Smart extending mechanism makes it easy to adjust the table to your preferred size. For indoor and outdoor use with UV protection.





Atlantic Table 210/280

## Sky Table Ø105

Sky Table is made of durable weather-resistant resin. Metallic frame will never unravel, rust or decay. It is UV protected which insures the colors will not fade. Can be disassembled. For indoor and outdoor use.



Climatic conditions  
4 mevsim kullanım



UV protected  
UV korumalı



Replacable  
Değişebilir



Porous  
Gözenekli



Indoor  
İç mekan



Outdoor  
Dış mekan



Sky Table Ø105

## Max Table 70

Table with plastic legs with HPL compact laminated tops  
12 mm available in white and black. For indoor and outdoor use.  
Can be disassembled.

\*Dark colors not recommended in direct sunlight.



Climatic conditions  
4 mevsim kullanım



Indoor  
İç mekan



Outdoor  
Dış mekan



Max Table 70



## Max Table Ø90

Table with plastic legs with HPL compact laminated tops  
12 mm available in white and black. For indoor and outdoor use.  
Can be disassembled.

\*Dark colors not recommended in direct sunlight.



Climatic conditions  
4 mevsim kullanım



Indoor  
İç mekan



Outdoor  
Dış mekan



Max Table Ø90

## Max Table I40

Table with plastic legs with HPL compact laminated tops  
12 mm available in white and black. For indoor and outdoor use.  
Can be disassembled.

\*Dark colors not recommended in direct sunlight.



Climatic conditions  
4 mevsim kullanım



Indoor  
İç mekan



Outdoor  
Dış mekan

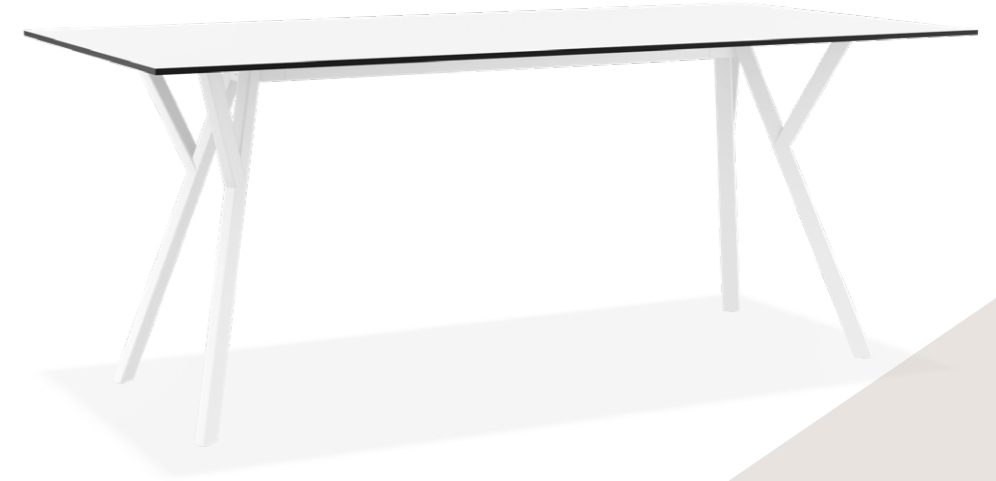
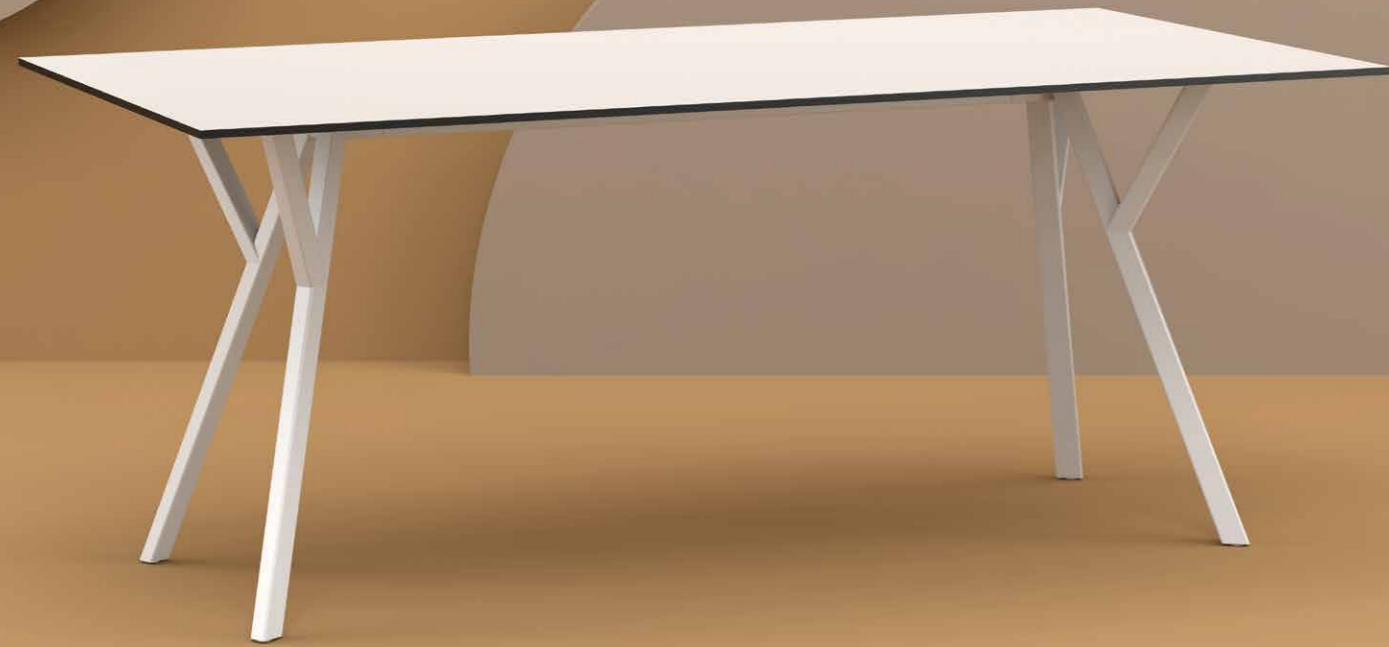


Max Table | 140

## Max Table 180

Table with plastic legs with HPL compact laminated tops  
12 mm available in white and black. For indoor and outdoor use.  
Can be disassembled.

\*Dark colors not recommended in direct sunlight.



Climatic conditions  
4 mevsim kullanım



Indoor  
İç mekan



Outdoor  
Dış mekan



Max Table 180

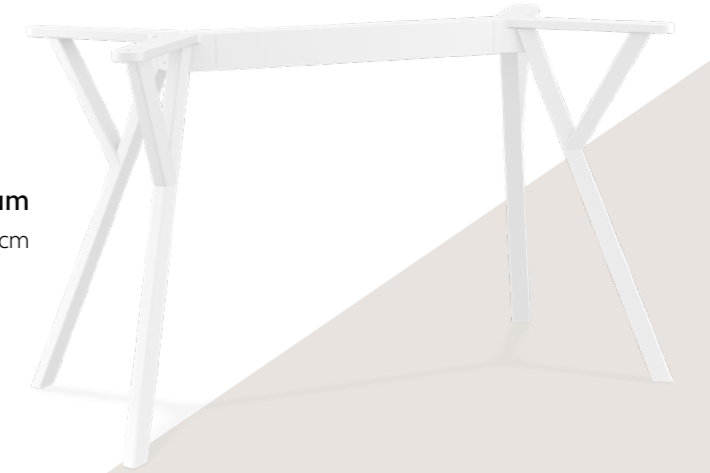
## Max Legs

Max Legs are made up of polypropylene reinforced with glass fiber with the latest generation of air moulding thermoplastic injection. For indoor and outdoor use. Can be disassembled.



**Max Legs Small**

\* Top min. 70x70 cm, Top max. 90x90 cm



**Max Legs Medium**

\* Top min. 70x120 cm, Top max. 80x160 cm



**Max Legs XL**

\* Top min 90x180 cm, Top max 100x200 cm



Climatic conditions  
4 mevsim kullanım



Indoor  
İç mekan



Outdoor  
Dış mekan



Max Legs



# Siesta exclusive

www.siesta.com.tr

By



CONTRACT FURNITURE SINCE 1976

## **GM di Grotoli Massimo srl**

Via E. Mattei 42, Loc. Orcjano 61038

Terre Roveresche (PU) Italia

T./F. +39 0721 977305 P.I. 02750240414

info@gmcontract.it www.gmcontract.it



/SiestaFurniture



İŞİLPLAST PLASTİK SANAYİ VE TİCARET A.Ş.  
Ulus Mah. Çatalca Yolu Cad. No:597 Tepecik 34537  
Büyüçekmece - İSTANBUL / TURKEY  
Tel: +90 212 861 50 00  
Fax: +90 212 861 00 24  
export@siesta.com.tr

